

THE HEATHLAND

BY NORTHWORKS ARCHITECTS



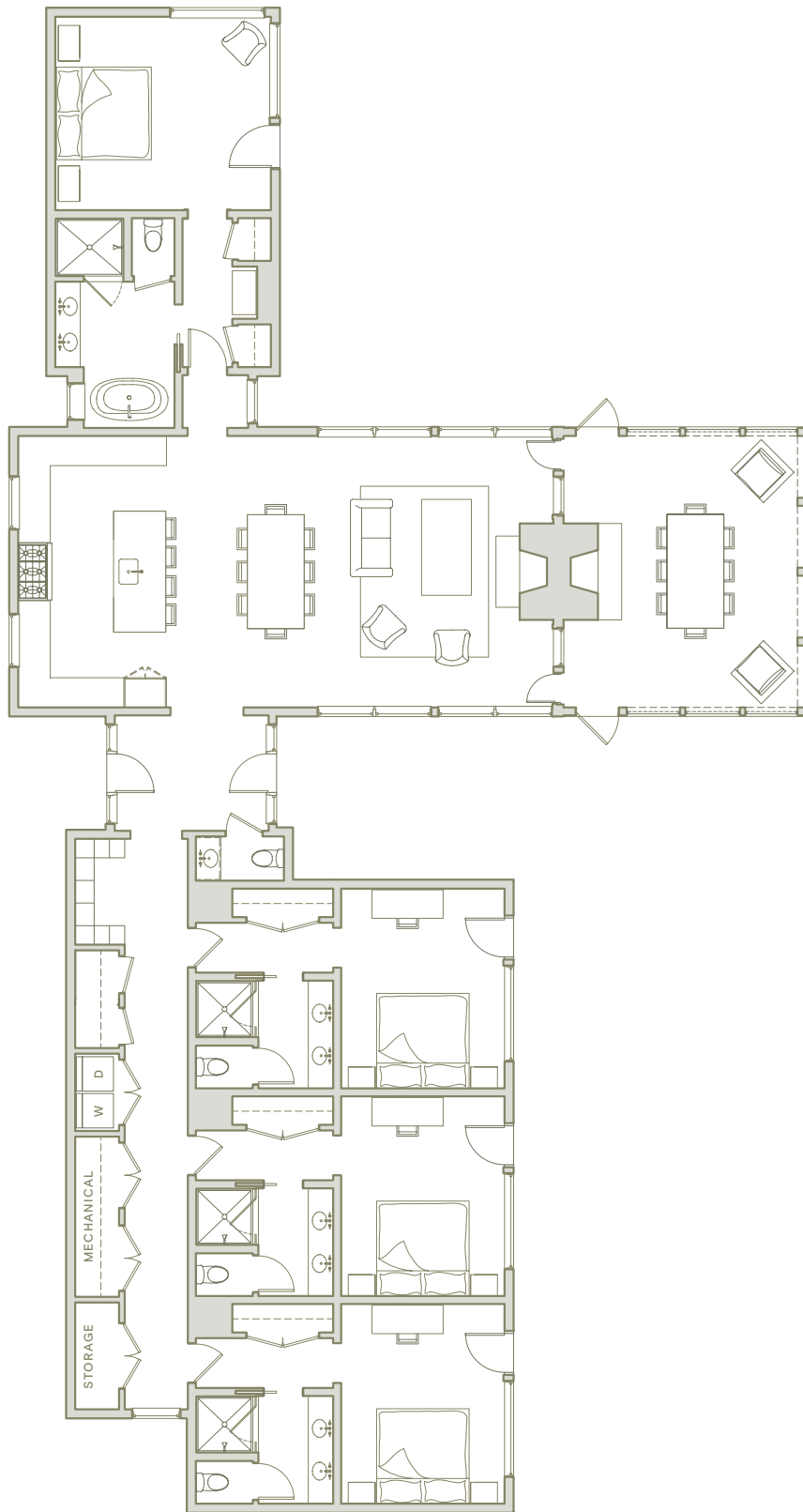
BEDROOMS	BATHROOMS	MAIN LEVEL	PORCH	TOTAL
4	4 FULL, 1 HALF	2,705 SQ. FT.	350 SQ. FT.	3,055 SQ. FT.

The Heathland by Northworks Architects celebrates the beauty of the outdoors and the intimacy of home. This residence features high, vaulted ceilings through the kitchen, dining room, and living room. Large floor-to-ceiling windows in the living area frame the beauty of the natural landscape and fill the room with light. A cozy, double-sided fireplace on the screened porch is the perfect space to spend time with friends and family year-round. The primary suite provides owners with sweeping views of the surrounding landscape with two large corner windows. This residence is perfect for those looking to entertain family and friends at Sand Valley between a few rounds of golf.

THE HEATHLAND

BY NORTHWORKS ARCHITECTS

MAIN LEVEL



THE LINKS

BY NORTHWORKS ARCHITECTS



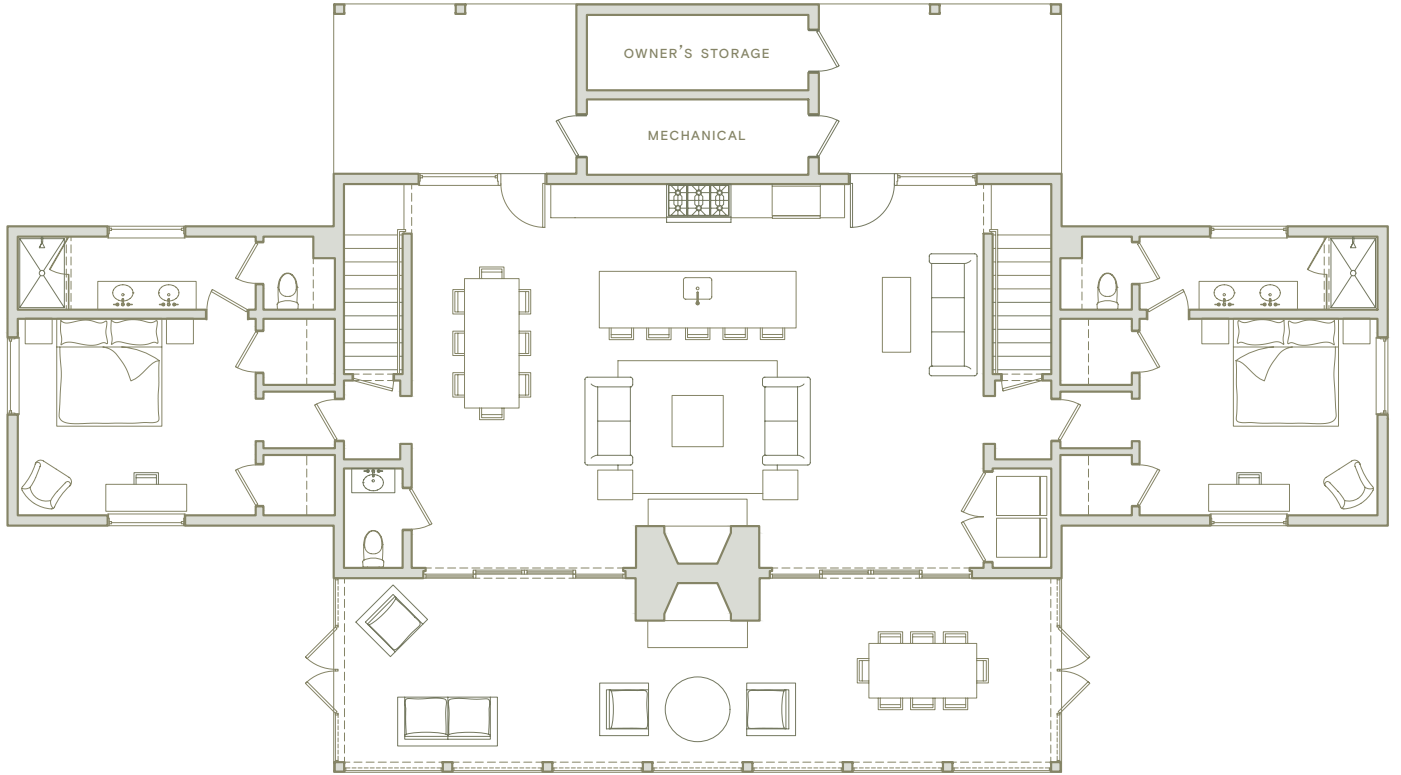
BEDROOMS	BATHROOMS	MAIN LEVEL	UPPER LEVEL	PORCH	TOTAL
4	4 FULL, 1 HALF	1,940 SQ. FT.	1,040 SQ. FT.	520 SQ. FT.	3,500 SQ. FT.

The Links by Northworks Architects offers almost 3,000 square feet spread out over two stories. This residence has two bedrooms on the main level, and two bedrooms upstairs. The main level bedrooms feature tall, vaulted ceilings and en-suite bathrooms. The main living space is perfect for entertaining, with two sliding doors leading out to an extra-large screened porch which is the perfect way to enjoy cool summer nights at Sand Valley. Upstairs, owner's will appreciate the two daybeds beneath each window to accommodate additional guests with ease. Dual staircases connect the main level with the upstairs, and there is ample space for owner's storage throughout the plan.

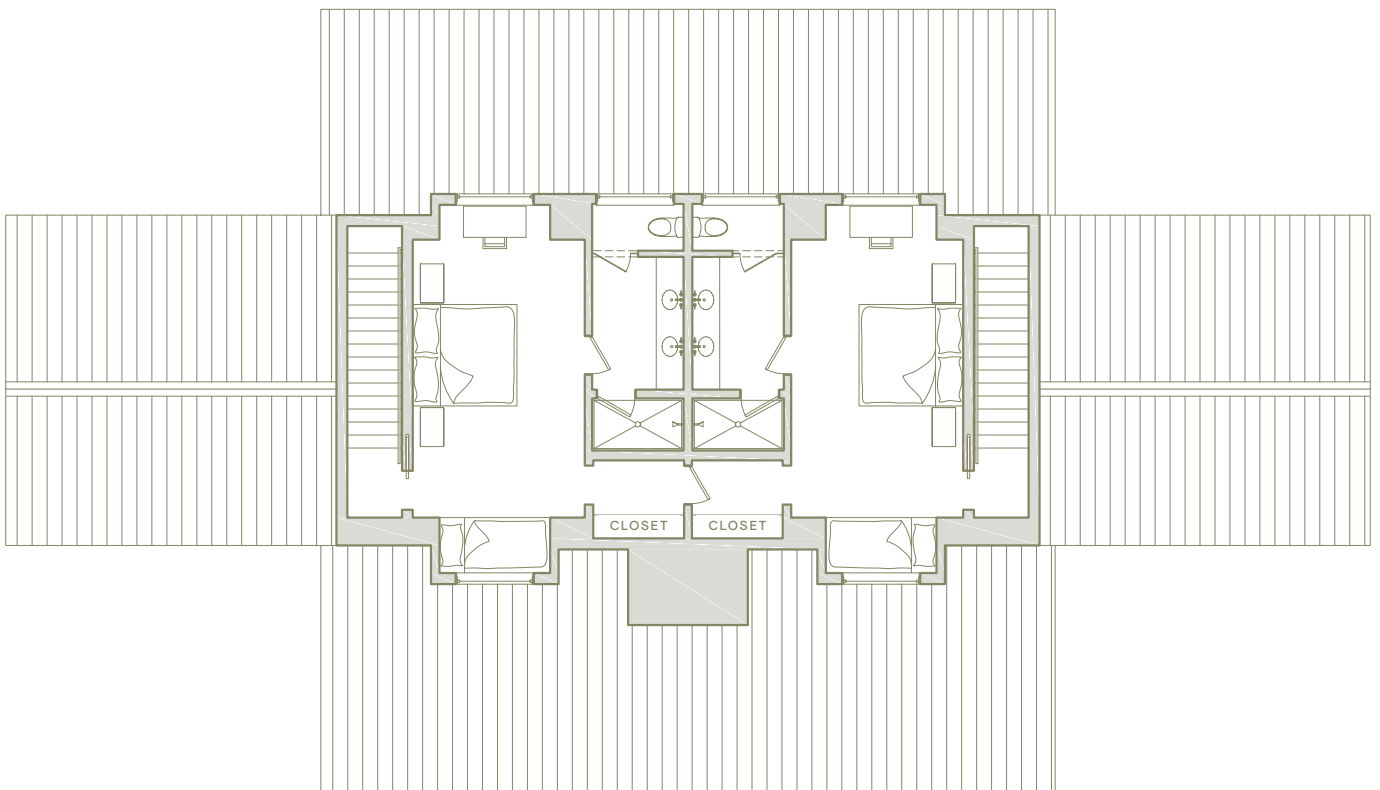
THE LINKS

BY NORTHWORKS ARCHITECTS

MAIN LEVEL



UPPER LEVEL



THE ESTELLA

BY BOOTH HANSEN ARCHITECTS



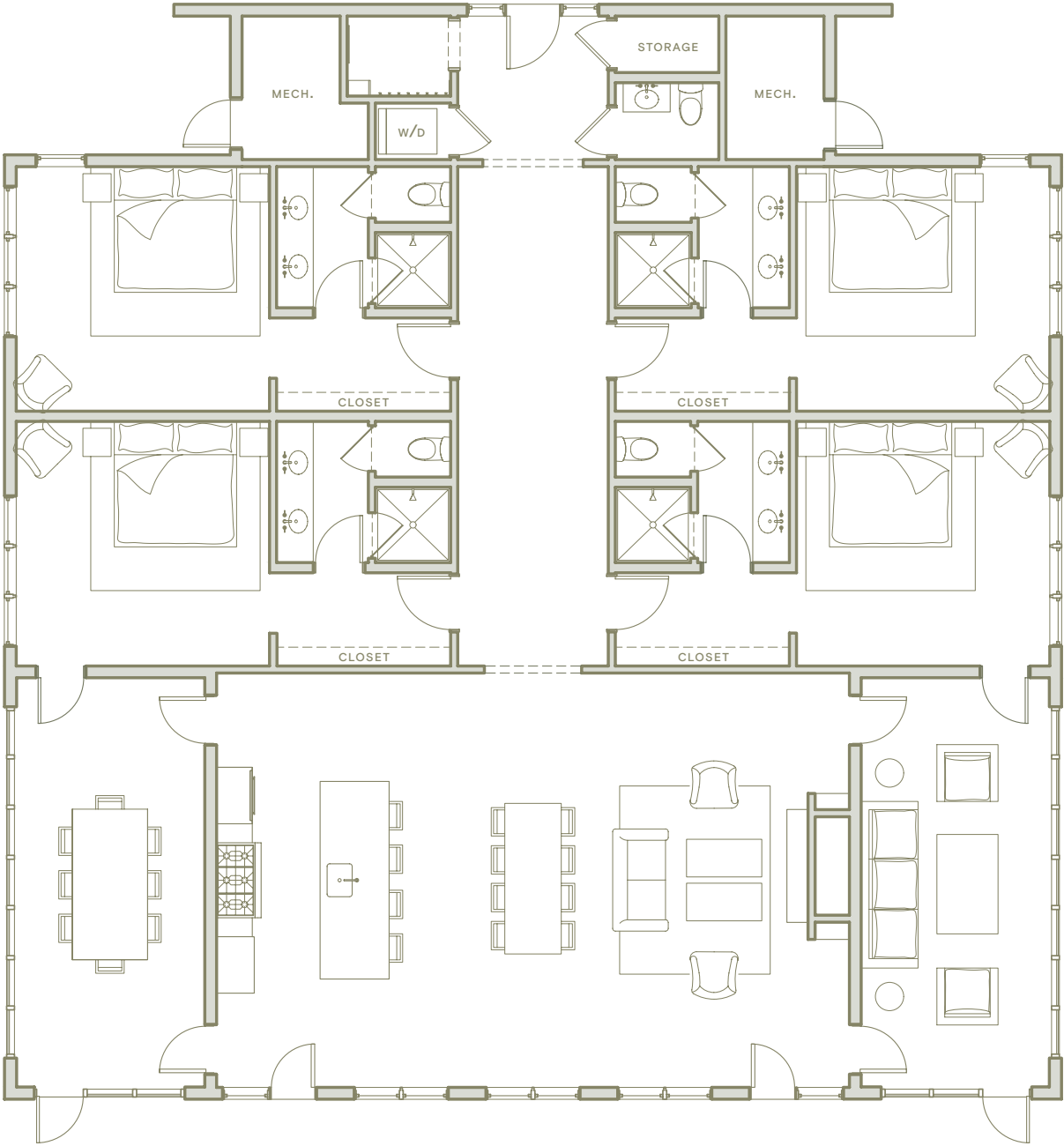
BEDROOMS	BATHROOMS	MAIN LEVEL	PORCH	TOTAL
4	4 FULL, 1 HALF	2,600 SQ. FT.	640 SQ. FT.	3,240 SQ. FT.

The Estella by Booth Hansen invites family and friends to gather and enjoy each other's company in a common living space perfect for entertaining. Upon entry, four skylights line the hallway that the four bedrooms are located along, with tall ceilings carried through this space. Each bedroom has large picture windows to capture the native environment surrounding each homesite. Two primary suites open up directly onto a screened porch, allowing even more natural light to fill these spaces. Pass through the hallway and guests will enter the kitchen, living, and dining spaces. The southern wall is covered in floor-to-ceiling windows, and there are dueling screened porches on either side of the common space for everyone to enjoy.

THE ESTELLA

BY BOOTH HANSEN ARCHITECTS

MAIN LEVEL



IMAGES DEPICTED ARE
RENDERINGS FOR
PERSPECTIVE AND SENSE
OF PLACE; DETAILS ARE
SUBJECT TO CHANGE

THE EDEN

BY THE KUBALA WASHATKO ARCHITECTS



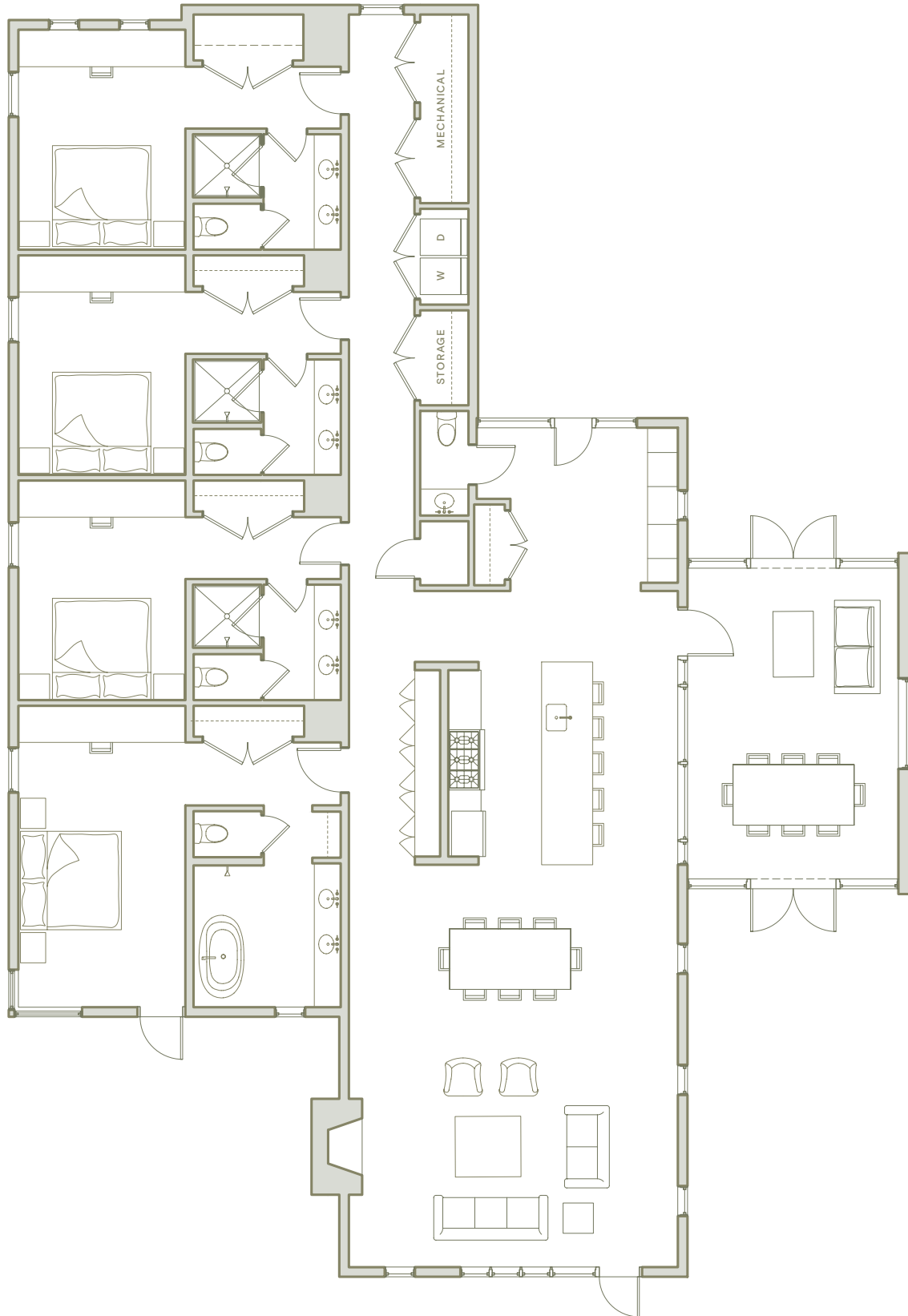
BEDROOMS	BATHROOMS	MAIN LEVEL	PORCH	TOTAL
4	4 FULL, 1 HALF	2,800 SQ. FT.	270 SQ. FT.	3,070 SQ. FT.

The Eden by Kubala Washatko offers uninterrupted, expansive views of the surrounding natural environment from the living room and beyond. High, vaulted ceilings through the central living space are a design focal point for this residence. The primary suite offers lots of natural light throughout the day, and the en-suite bathroom has a well-appointed wet room and picture window to make the space feel light and bright. Each bedroom lining the hallway behind the living space has beautiful built-in desks and ample storage space for each guest. The screened porch, located right off of the kitchen, is the perfect space to enjoy delicious meals and take in the views of Sand Valley.

THE EDEN

BY THE KUBALA WASHATKO ARCHITECTS

MAIN LEVEL



THE CAPE

BY THE KUBALA WASHATKO ARCHITECTS



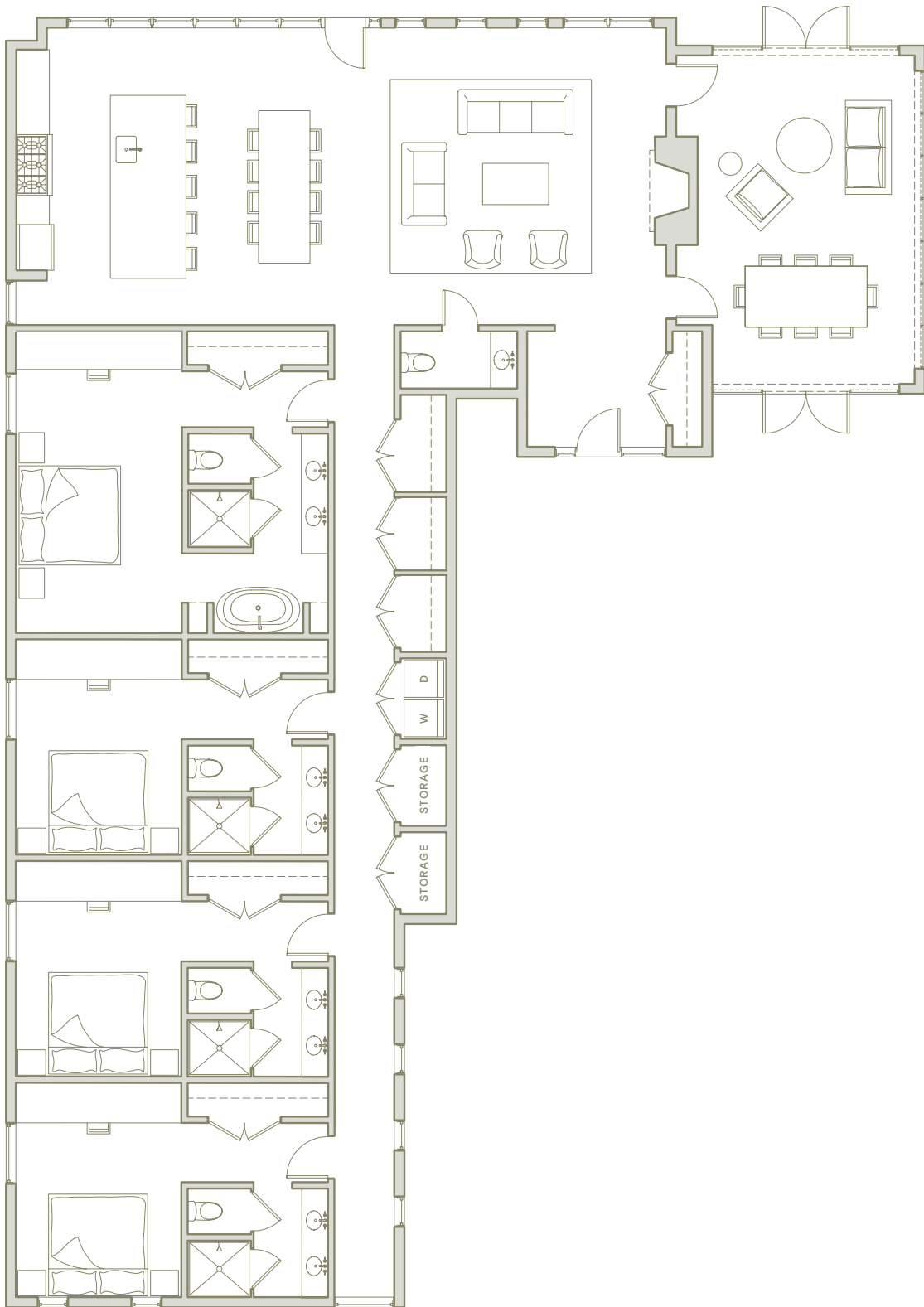
BEDROOMS	BATHROOMS	MAIN LEVEL	PORCH	TOTAL
4	4 FULL, 1 HALF	2,820 SQ. FT.	350 SQ. FT.	3,170 SQ. FT.

The Cape by Kubala Washatko brings the outdoors within the walls of this residence by offering panoramic views of the restored Wisconsin landscape at Sand Valley. The foyer features built-in storage and ample closet space, and opens up to the living room. The central living area is anchored by a stately fireplace and floor-to-ceiling windows to enjoy panoramic views out. The primary suite is right off of the hallway and has corner windows to maximize the daylight. This plan can support an option bonus bunk room at the end of the hallway for owners looking to entertain additional guests.

THE CAPE

BY THE KUBALA WASHATKO ARCHITECTS

MAIN LEVEL



THE ALPS

BY THE KUBALA WASHATKO ARCHITECTS



BEDROOMS	BATHROOMS	MAIN LEVEL	UPPER LEVEL	PORCH	TOTAL
4	4 FULL, 1 HALF	2,800 SQ. FT.	1,450 SQ. FT.	380 SQ. FT.	4,630 SQ. FT.

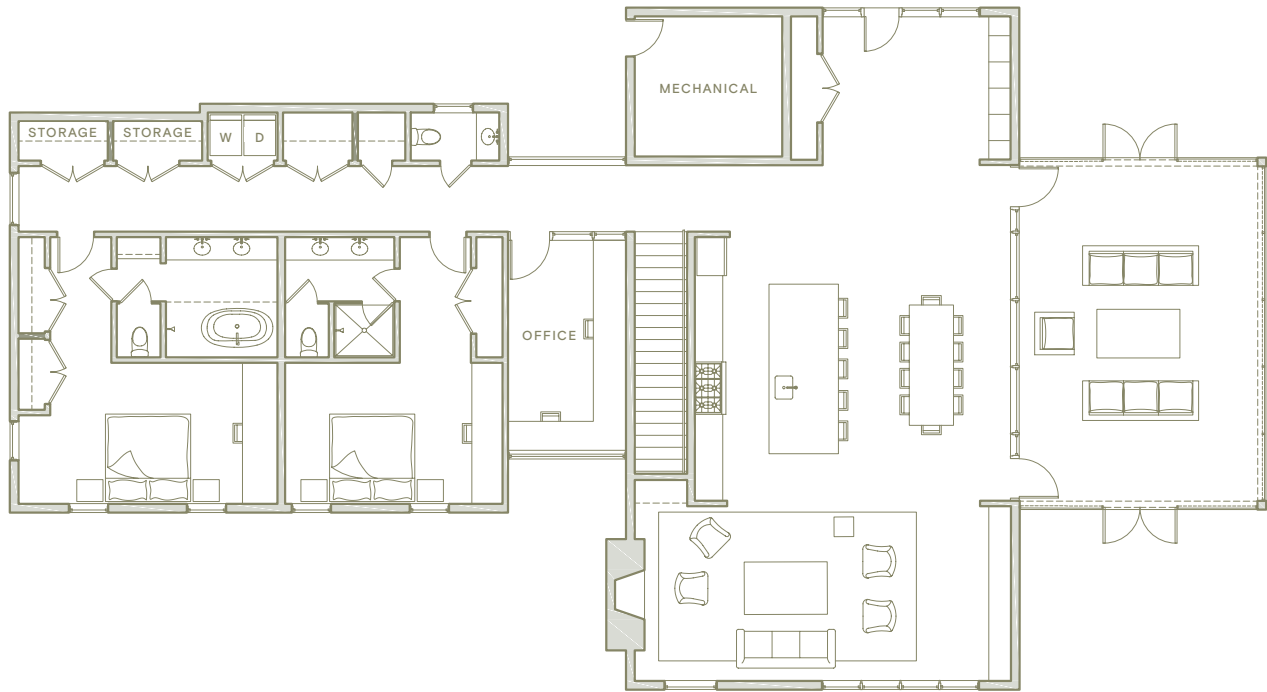
The Alps by Kubala Washatko is a striking two-story residence with ample space to entertain family and friends at Sand Valley. The kitchen and dining room lead seamlessly to the screened porch, ideal for easy meal times with guests any time of the day. The living room spans the entire southern wall, with floor-to-ceiling windows and a fireplace anchoring the space. This residence offers two primary suites, one on each level, with wet rooms in each bathroom and plenty of closet storage space. There is a large office on the main level and a bunk room on the upper level with its own en-suite bathroom.

This residence offers great flexibility to the owner within its footprint.

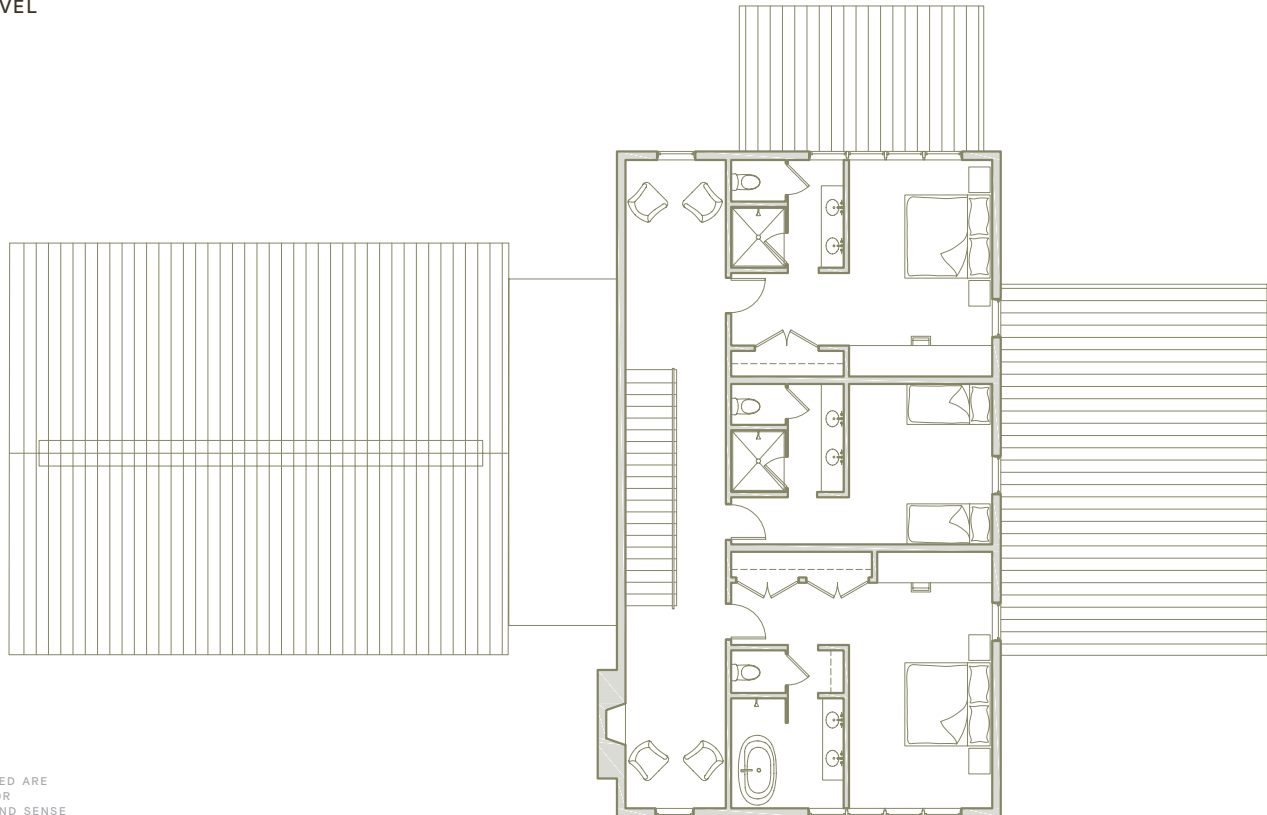
THE ALPS

BY THE KUBALA WASHATKO ARCHITECTS

MAIN LEVEL



UPPER LEVEL



IMAGES DEPICTED ARE
RENDERINGS FOR
PERSPECTIVE AND SENSE
OF PLACE; DETAILS ARE
SUBJECT TO CHANGE

THE RAYNOR

BY BOOTH HANSEN ARCHITECTS



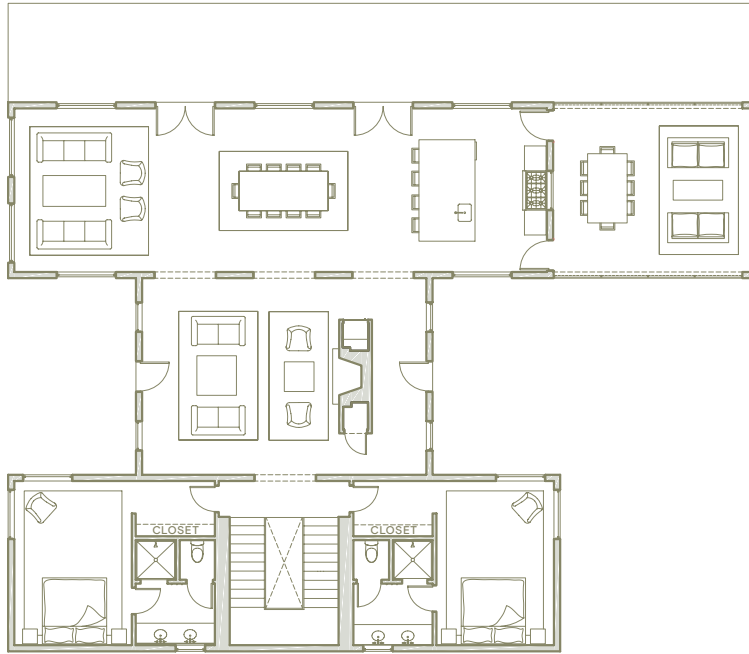
BEDROOMS	BATHROOMS	MAIN LEVEL	UPPER LEVEL	LOWER LEVEL	PORCH	TOTAL
4	4	2,571 SQ. FT.	996 SQ. FT.	983 SQ. FT.	376 SQ. FT.	4,917 SQ. FT.

The Raynor by Booth Hansen is designed for elevated living and designed to be enjoyed by family and friends alike every season at Sand Valley. The living room seamlessly connects the dining room and kitchen to an outdoor deck through expansive windows sheltered by a large roof overhang. There are two bedrooms on the main level and two bedrooms on the upper level, all with their own en-suite bathroom. Each bathroom was designed to allow ample natural light through the tall windows positioned directly above the countertop. Linking the two wings of the house is a cozy den, featuring a large fireplace and cozy finishes.

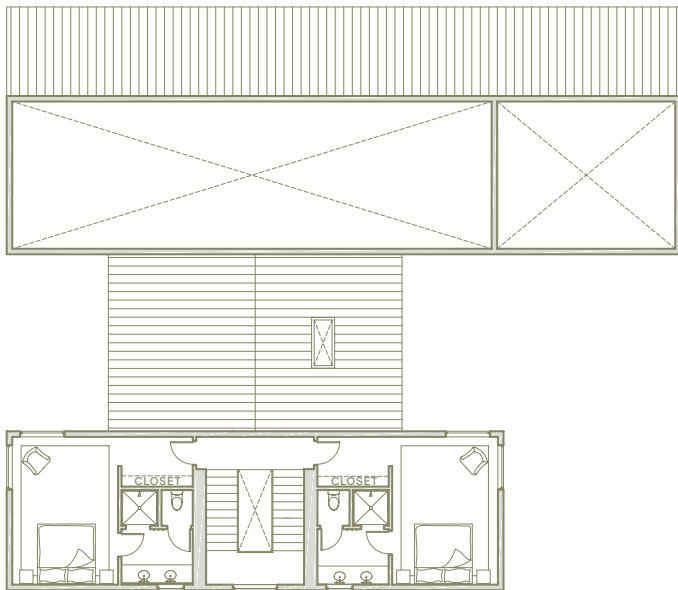
THE RAYNOR

BY BOOTH HANSEN ARCHITECTS

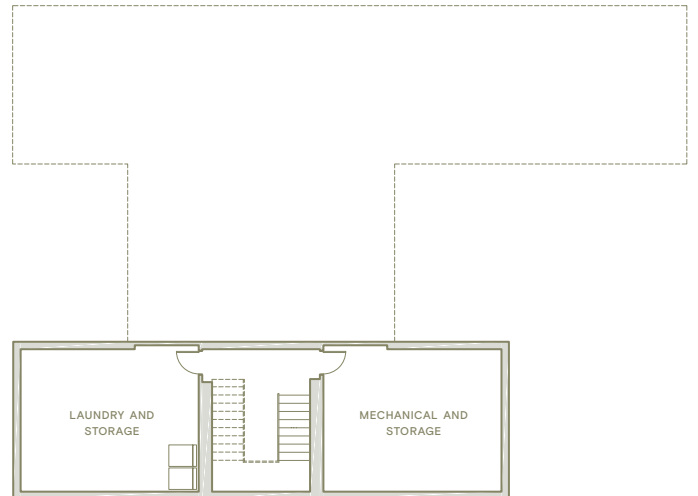
MAIN LEVEL



UPPER LEVEL



BASEMENT



THE DUNES

BY BOOTH HANSEN ARCHITECTS



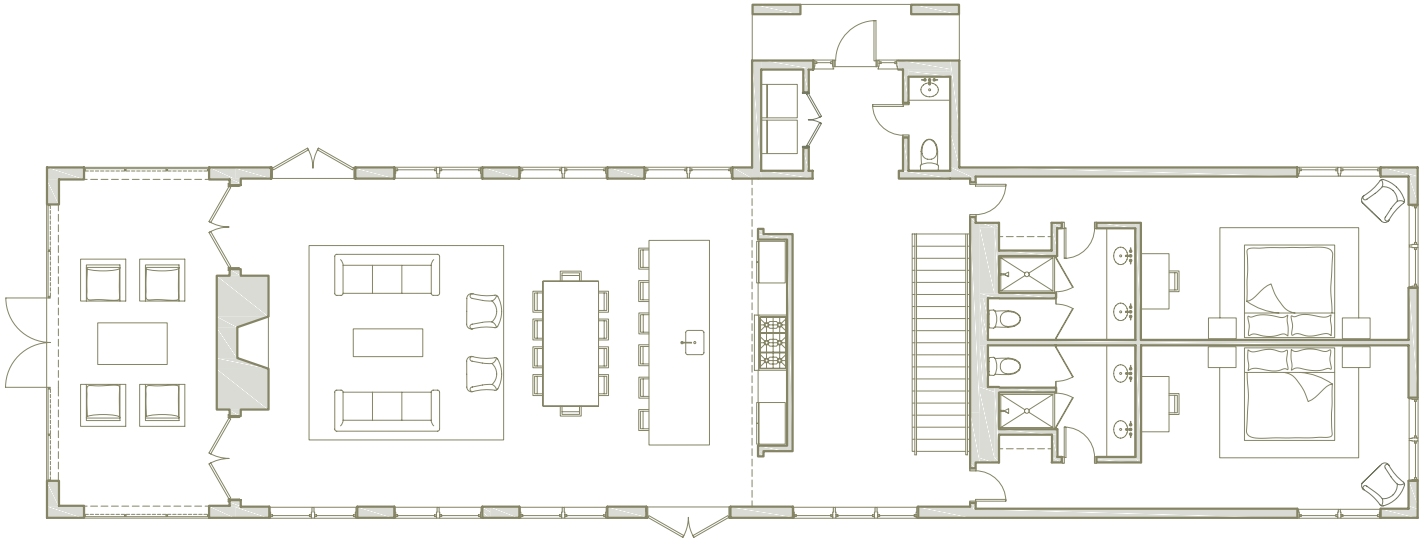
BEDROOMS	BATHROOMS	MAIN LEVEL	UPPER LEVEL	PORCH	TOTAL
4	4 FULL, 1 HALF	2,262 SQ. FT.	1,404 SQ. FT.	343 SQ. FT.	4,009 SQ. FT.

The Dunes by Booth Hansen is defined by its soaring 30 foot ceilings and double stacked windows flanking both sides of the main living space. Walking in, a large foyer frames the view to the outside, and to the right the space opens up into the main living area. The kitchen, dining, and living room are a welcoming area to spend time with friends and family. There are two bedrooms on the main level and two on the upper level, each with plenty of windows to enjoy the views out to the surrounding landscape. A bonus bunk room and loft area on the upper level provide owners with space for an office or an entertainment area. With panoramic views of the surrounding landscape, this plan seamlessly integrates indoor and outdoor spaces.

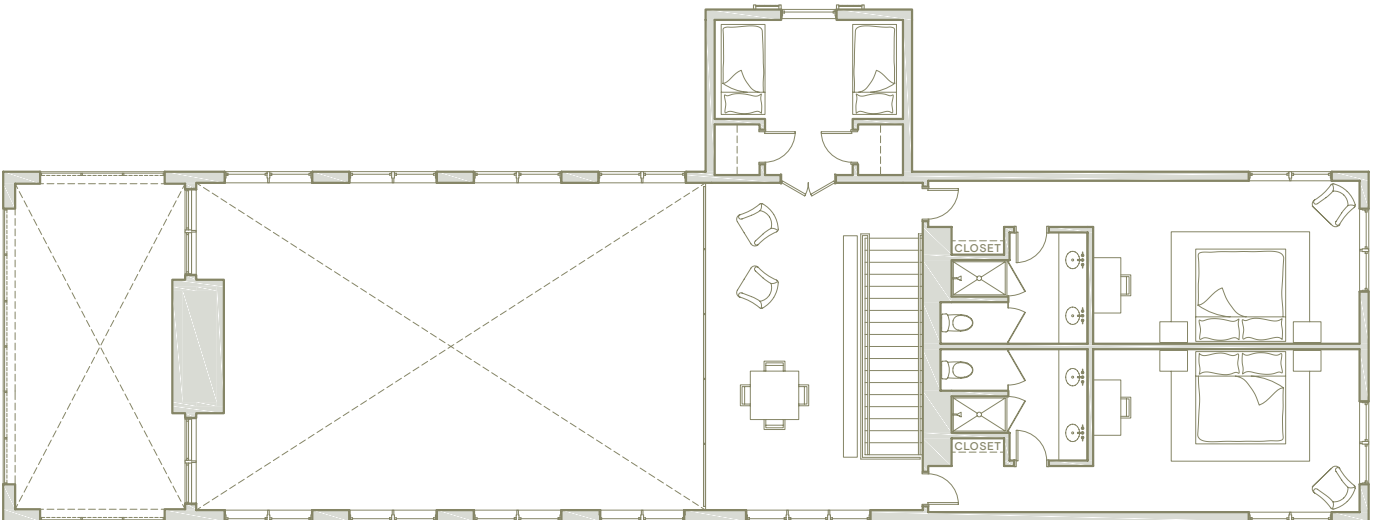
THE DUNES

BY BOOTH HANSEN ARCHITECTS

MAIN LEVEL

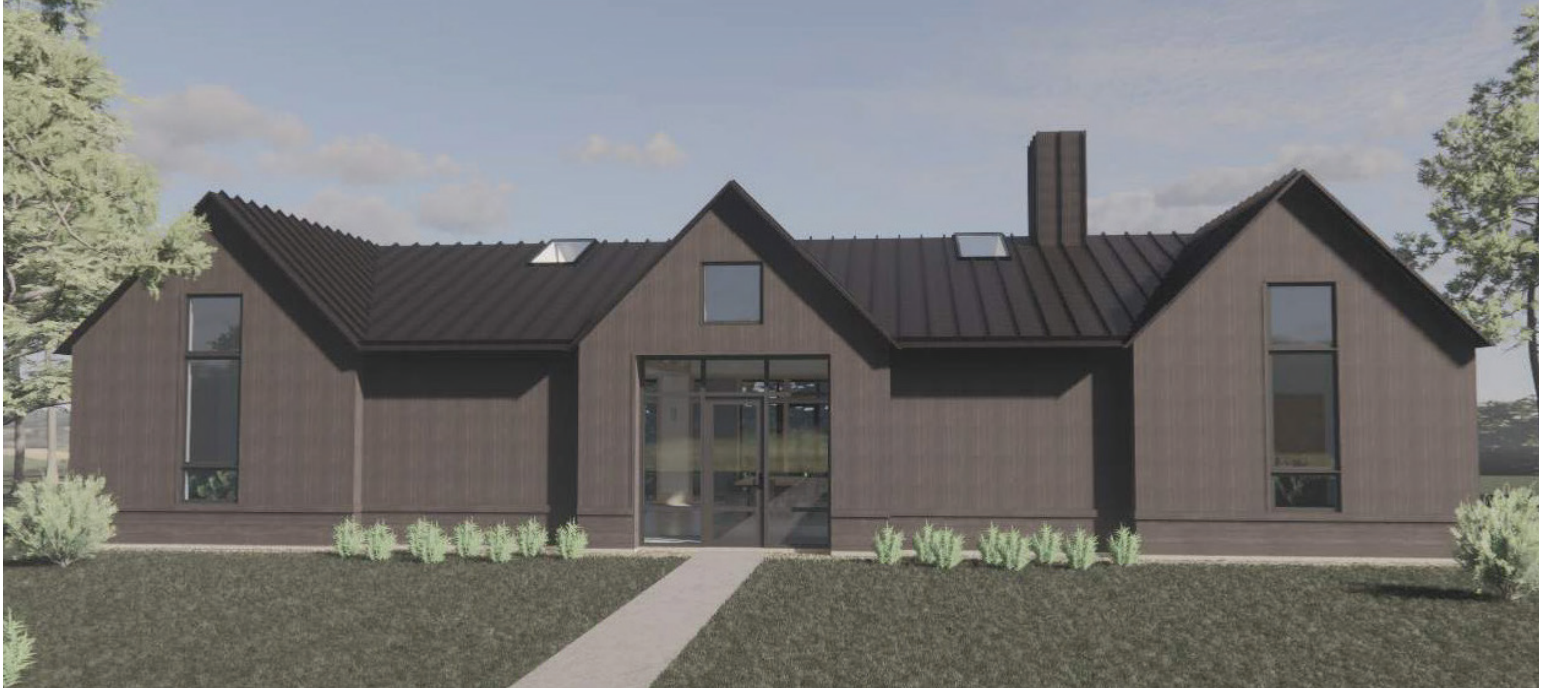


UPPER LEVEL



THE BERWICK

BY BOOTH HANSEN ARCHITECTS



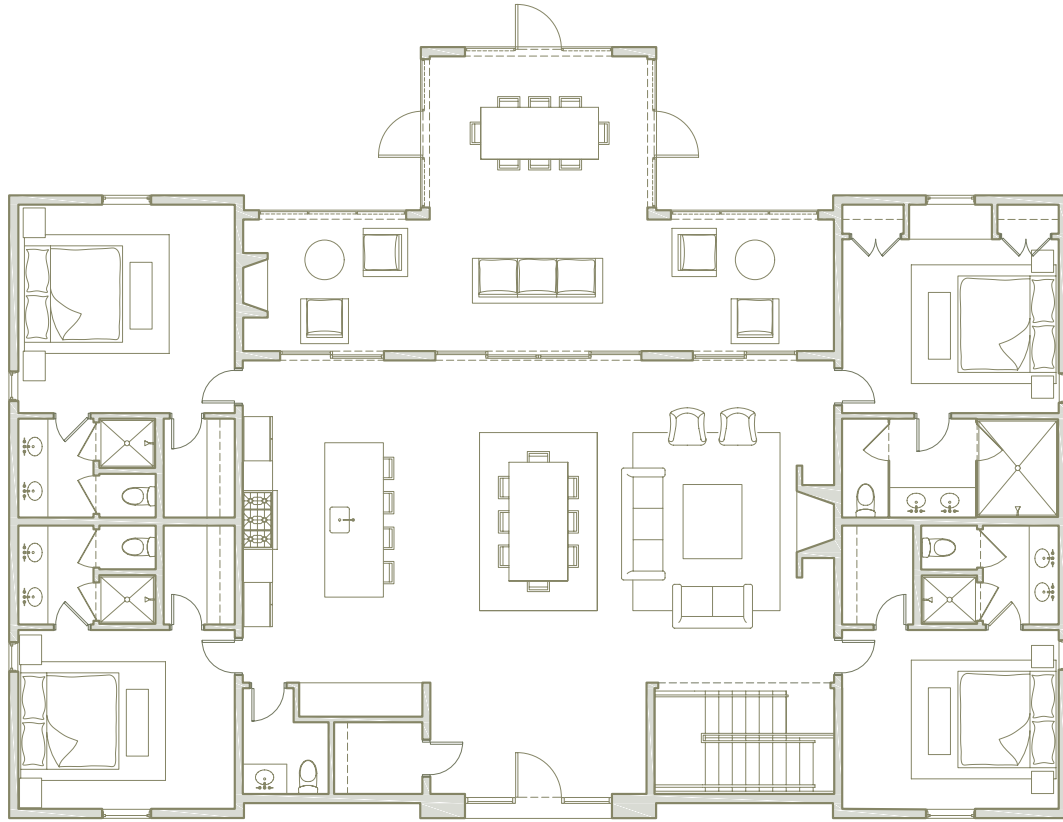
BEDROOMS	BATHROOMS	MAIN LEVEL	LOWER LEVEL	PORCH	TOTAL
4	4 FULL, 1 HALF	2,582 SQ. FT.	920 SQ. FT.	389 SQ. FT.	3,891 SQ. FT.

The Berwick by Booth Hansen features 3,891 square feet of living space with an inviting open floor plan. Skylights and floor to ceiling windows spanning the southern wall of the residence fill the main living space with natural light. Adjacent to the living space, the screened porch bridges the interior and exterior. Four bedrooms flank each corner of the house, providing each guest with more privacy than other plans. The primary suite features thoughtful built-ins for storage, and the bathroom has an option for a tub or an extra large shower. An optional lower level has a bunk room exclusively for owner use and an expanded laundry and owner's storage space.

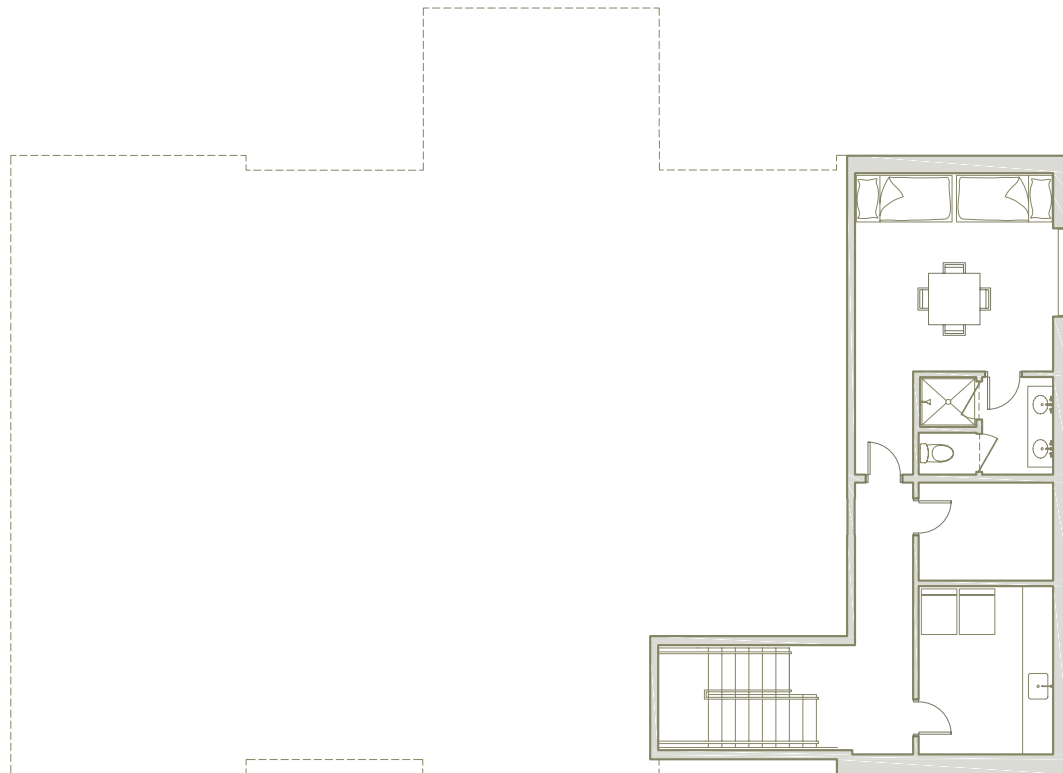
THE BERWICK

BY BOOTH HANSEN ARCHITECTS

MAIN LEVEL



LOWER LEVEL



IMAGES DEPICTED ARE
RENDERINGS FOR
PERSPECTIVE AND SENSE
OF PLACE; DETAILS ARE
SUBJECT TO CHANGE